



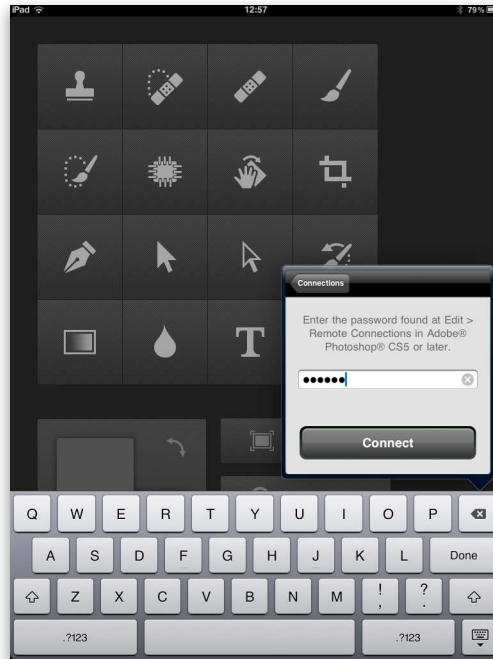
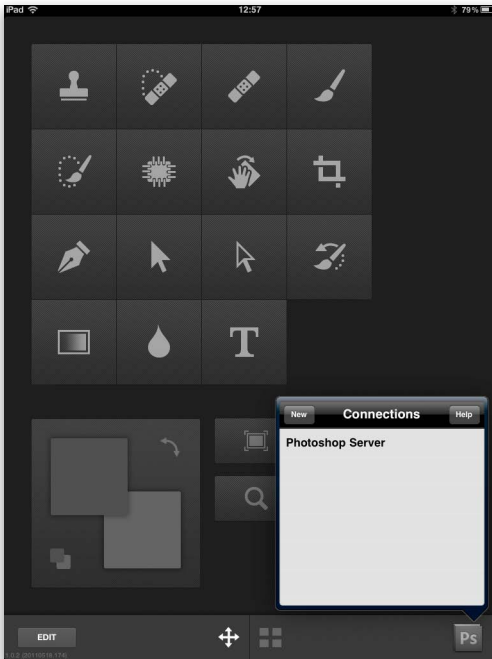
Adobe Nav App for tablet devices

Adobe Nav app for tablet devices

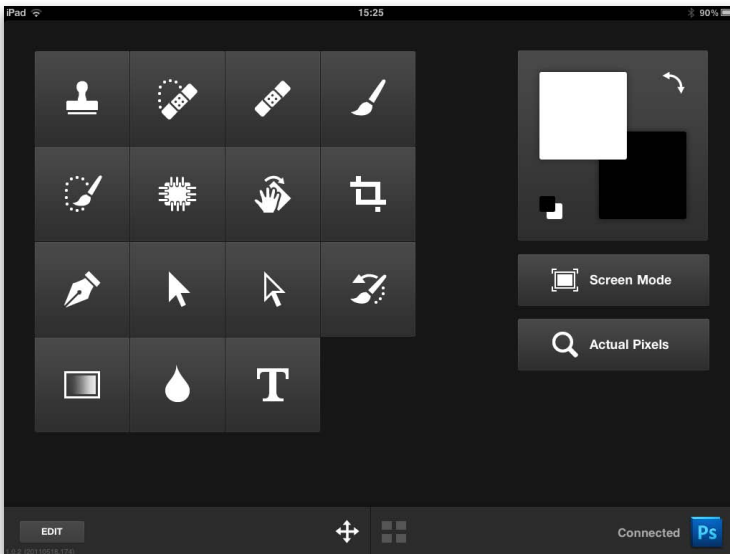
Tablet devices have become increasingly popular, especially with the advent of the Apple iPad. In response to this Adobe have created a number of Adobe Touch apps for tablet devices, including the Adobe Nav app that's described on these pages. This is essentially a controller for Photoshop and is something that you will have to purchase separately, though the cost is only a few dollars. Using this app you can customize the list of tools that you use most frequently and then by having your tablet device placed alongside the mouse and keyboard, use the touch screen to quickly select a desired tool. In addition to this you can select a foreground/background color plus navigate open documents in Photoshop to bring specific images into the foreground. I think this is an interesting development for tablet devices, but it's still an early version 1 app. It will be interesting to see what Adobe do to expand the functionality and how much users will be able to customize the controls to create something similar to what we have already in the customizable Configurator panel.



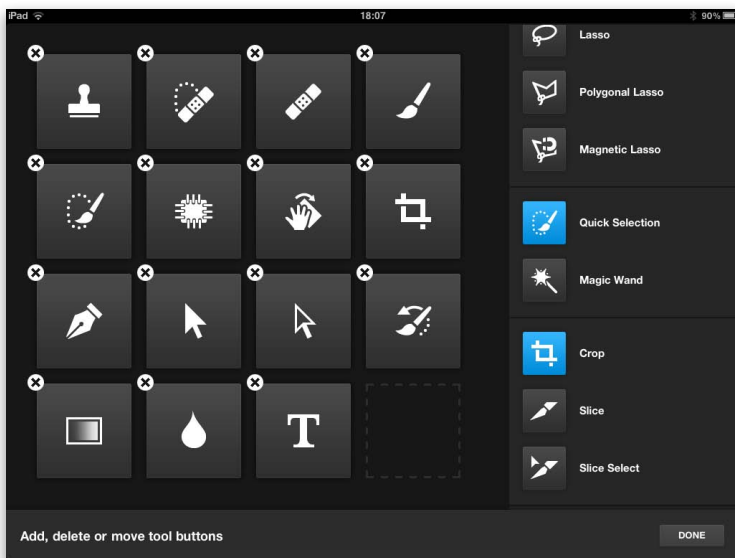
1 To begin with you'll need to establish a connection between Photoshop running on your computer and the tablet device that's running the Adobe Nav app. First, go to the Edit menu in Photoshop and choose Remote Connections... This opens the Remote Connections dialog shown here. Choose a name for the server connection (or leave as 'Photoshop Server') and choose a password for your connection.



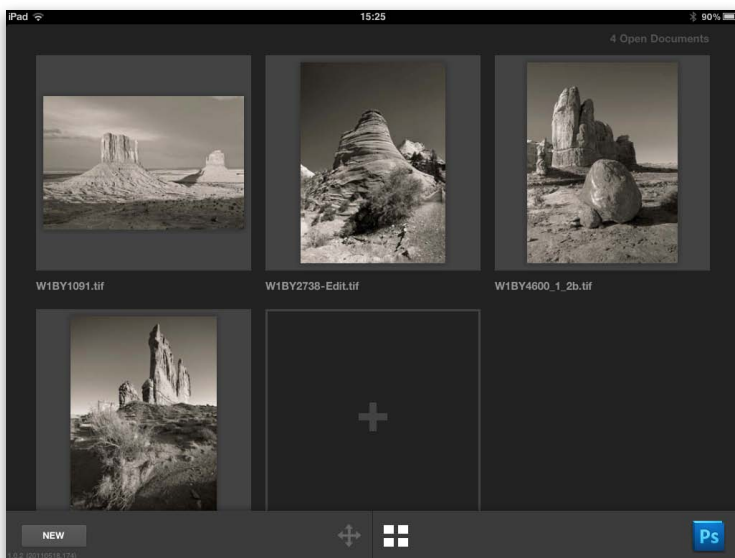
2 In the Adobe Nav App, click on the PS icon at the bottom and click on the desired server name, i.e. 'Photoshop Server'. You will then be prompted to enter the password, after which you can click on the Connect button to establish a server connection.



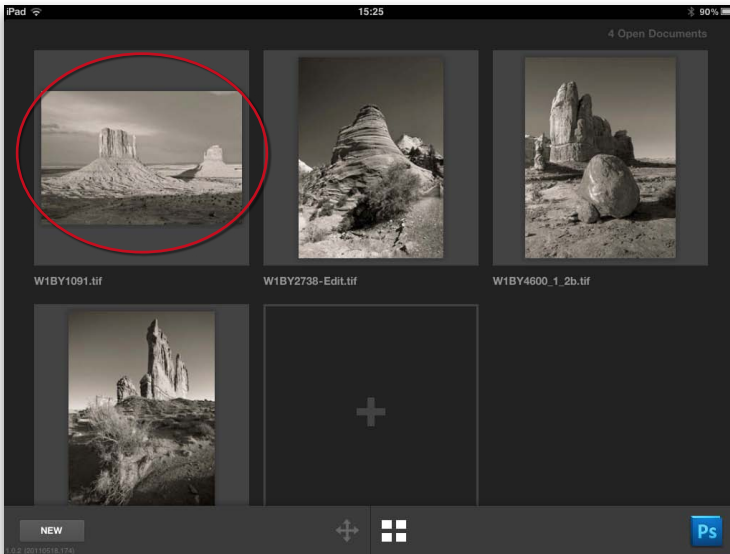
3 Once connected the PS logo in the bottom right corner will appear illuminated in color. In the main screen you'll notice that you have access to a default set of tools. By clicking on these icons you can use your tablet to select these tools for you in Photoshop without having to navigate to the tools panel. Like all other tablet apps, you can rotate the tablet to orientate the interface from a portrait to a landscape viewing mode.



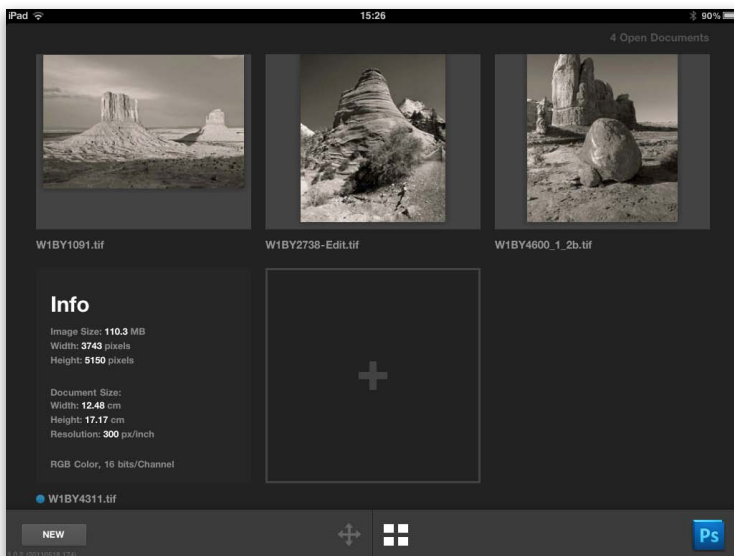
4 If you click on the Edit button (see Step 3) this allows you to edit the tool selection that appears in the main screen. You simply click on the x icon to remove a tool and drag from the list on the right to add a new tool. The tools that are already included are colored blue.



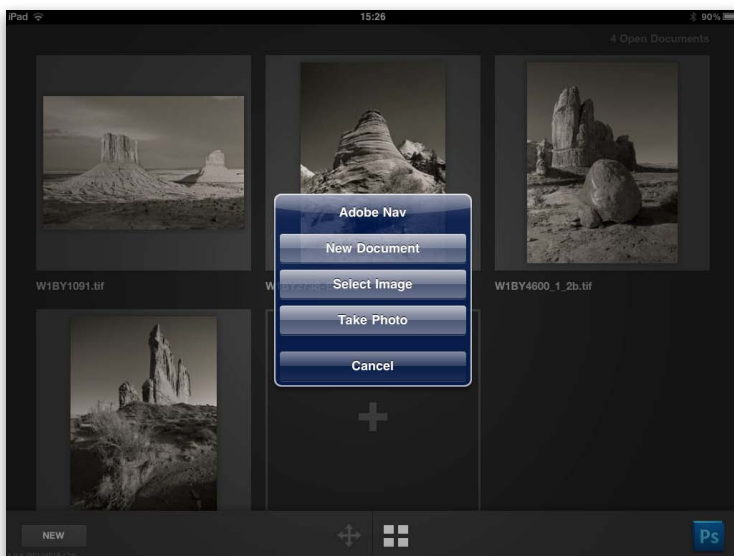
5 Back in the main screen, if you click on the document view button (circled), this provides a thumbnail view of all the photos that are currently open in Photoshop. By clicking on the thumbnails you can quickly make individual images active.



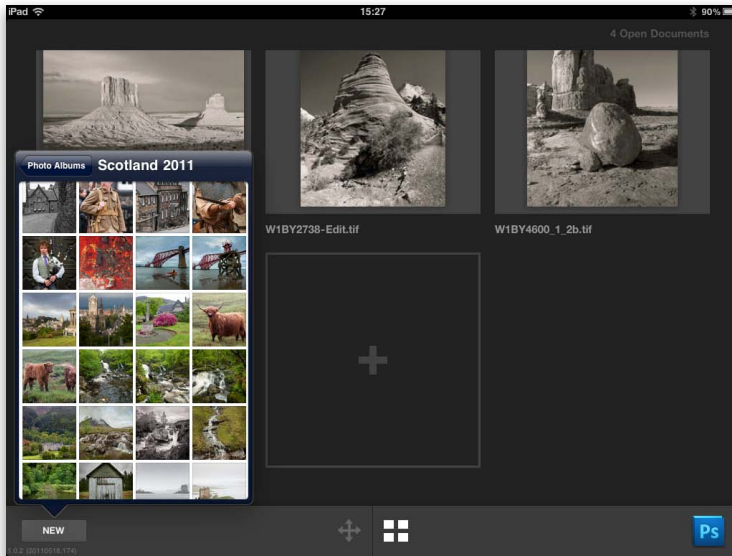
6 Typically, you would click on an image, like the one circled here and this photo will be made active in Photoshop. This is a particularly useful feature if you need to edit a lot of images at once in Photoshop.



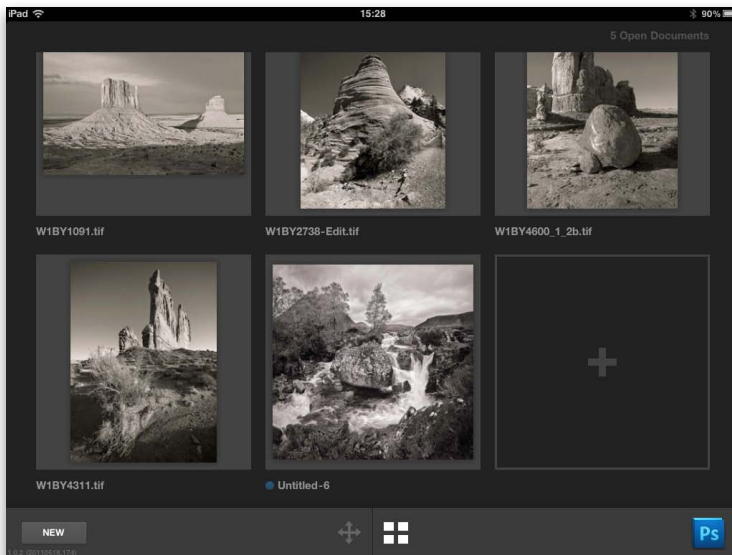
7 If you double-click a thumbnail in the Adobe Nav app, this shows you some of the key information about that image such as the image size, dimensions and bit depth.



8 If you click on the New button (circled) you are given a list of options. New Document will open the New Document dialog and allow you to create a new empty document in Photoshop. If you click the Take Photo button you can use your tablet device to photograph something and transfer the image to the computer and open it in Photoshop (though it won't actually be stored on the computer until you actually save it).



9 If you click on the Select Image button shown in Step 9, this allows you to select any image that is currently stored on your tablet device and open it via Photoshop on the computer. Here, I navigated the photos stored on my iPad to open a particular image.



10 How that image opens up will depend on the device you are using. In the case of the iPad it seems that every image opened this way will do so with a missing profile, which can lead to the photos looking incorrect on the display. There isn't anything Adobe can do about this, so you will need to assign an sRGB profile via the Edit menu.

Adobe™ Photoshop™ CS6 for Photographers

This PDF is supplied on the website that accompanies the *Adobe Photoshop CS6 for Photographers* book by Martin Evening. This latest update in the Adobe Photoshop for Photographers series contains 768 pages in full color, plus a website containing video tutorials. The book contains updated advice on everything you need to know about using Photoshop, from digital capture to print output, as well as all that is new in Adobe Photoshop CS6.

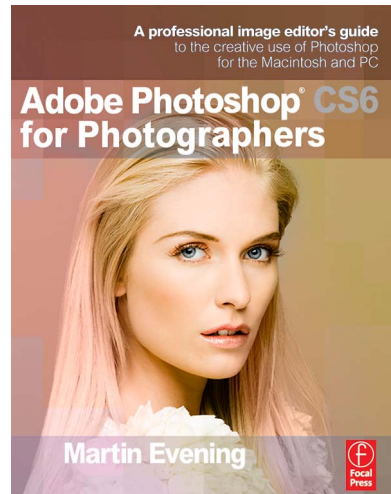
PDF usage

This PDF extract is available to view and print. You may share this PDF file or any links to the PDF file with others, but the copyright of the material and images remain the property of Martin Evening. The contents may not be modified in any way, or used commercially without express permission from the author.

Website

There is a website for the book from where you can find more information and download more PDF sample pages from the book.

www.photoshopforphotographers.com



To order the book

Adobe Photoshop CS6 for Photographers is published by Focal Press.

ISBN: 9780240526041

The title is stocked in most major bookstores throughout the world and is also available to purchase from:

www.focalpress.com as well as through the on-line bookstores: www.amazon.com and www.amazon.co.uk.